

## JDD CONSULTANTS REVISION COURSES FOR THE 2018 EQE EXAMINATIONS

### COURSE FEES

Course fees cover tuition, meals, accommodation use of the leisure facilities at the Training Centre, but exclude VAT.

Each £630/£640/£680 +VAT  
1.5/1.8/2 day course includes 1 night accommodation and meals.

Accommodation before courses is £70+VAT with breakfast and £95+VAT with dinner also.

**Special offer:** The fee for all three Papers A-D courses between 27 November and 1 December, with 4 nights' accommodation is £1,870+VAT - saving £130+VAT.

Fees should be paid at least two weeks before the course.



**By Internet** Visit our website at [www.jddcourses.co.uk](http://www.jddcourses.co.uk) and book online or e-mail [jdd.consultants@ntlworld.com](mailto:jdd.consultants@ntlworld.com) or [admin@jddcourses.co.uk](mailto:admin@jddcourses.co.uk)



**By telephone** Please phone +44(0)1234-294049 or +44(0)7791-959630



**By fax** Fax a booking form or details to 0800 066 4016



**By post** Return a completed booking form to:

JDD Consultants  
5 Tennyson Road  
Bedford MK40 3SB

Places are allocated on a 'first come, first served' basis, so early bookings are advised. Unplaced applicants will be placed on a waiting list.

Payment can be made via BACS, cheque or card.

### JOINING INSTRUCTIONS

Will be sent to course members 3-4 weeks before the start of each course, together with a course programme and details of any pre-course work.



### CANCELLATION FEES

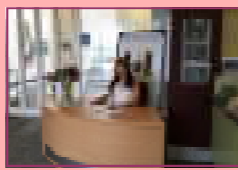
Withdrawal from a course without a replacement from your organisation will incur the following cancellation fees: >1<2 weeks prior, 10%; <1 week prior 50%; and on the course start date, 100%.



### THE TRAINING VENUE

The courses will be held at the **Kents Hill Park Training Centre, in Milton Keynes**. This is a modern purpose-built training centre with its own residential and leisure facilities, including gym, swimming pool and squash courts.

The residential element is an important feature of our courses, enabling delegates to discuss issues with colleagues and tutors in an informal atmosphere over meals and after dinner.



# JDD CONSULTANTS REVISION COURSES

FOR THE 2018 EQE EXAMINATIONS

2-3 NOVEMBER

&

27 NOVEMBER - 5 DECEMBER 2017



We are pleased to announce our programme of residential revision courses for candidates preparing for the spring **2018 European Qualifying Examinations (EQE)** for Professional Representatives before the European Patent Office and the **Pre-Exam**.

The courses will be held in **Milton Keynes** and will be provided by an experienced team of tutors. There is an upper limit of delegates on each course and, as applications are dealt with on a 'first come, first served' basis, **early bookings are strongly advised**.



Please ensure that all interested people in your organisation see this leaflet.

## JDD EQE RESIDENTIAL REVISION COURSES

Ref. No.	Course	Tutor(s)	Dates	Attendance Details	Fee+	Meals & Accommodation
18/E1	Course for 2018 Pre-Exam	Mark Yeadon <i>Yeadon IP</i> Matt Holmes <i>Jaguar Land Rover</i> Jack Gunning <i>Forresters</i>	4-5 December 2017	10am on 4th to 4.30pm on 5th	£640	L, D, A, B, L
18/E2	Introduction to Paper D	Matt Holmes & Mark Yeadon	3 November 2017	9.30am to 5.30pm	£300	L
18/E3	Law <i>Legal Paper D</i>	Matt Holmes, Mark Yeadon & Jack Gunning	27-28 November 2017	9.30am on 27th to 1pm on 28th	£630	L, D, A, B, L
18/E4	Law <i>Legal Paper D</i>	Matt Holmes, Mark Yeadon & Jack Gunning	28-29 November 2017	2pm on 28th to 5.30pm on 29th	£630	L, D, A, B, L
18/E5	Introduction to Paper C	Chris Mercer	2 November 2017	9.30am to 5.30pm	£300	L
18/E6	Opposition Paper C	Chris Mercer & Etta Collier	27-28 November 2017	9.30am on 27th to 1pm on 28th	£630	L, D, A, B, L
18/E7	Opposition Paper C	Chris Mercer & Etta Collier	28-29 November 2017	2pm on 28th to 5.30pm on 29th	£630	L, D, A, B, L
18/E8	Drafting & Amendment Papers A & B	Andy Leppard & William Richards <i>Script IP Ltd.</i>	30 November - 1 December 2017	9.30am on 30th to 5.30pm on 1st	£680	L, D, A, B, L
18/E9	Drafting & Amendment Papers A & B	Doug Ealey <i>D. Young &amp; Co.</i>	30 November - 1 December 2017	9.30am on 30th to 5.30pm on 1st	£680	L, D, A, B, L

+ Exclusive of VAT Key: A = Accommodation at venue; B = Breakfast; D = Dinner; L = Lunch.

### MOODLE FORUM

All the courses are supported by an online Moodle forum which links together course members and includes additional resources to be used before and after the face-to-face courses. On booking, you will be given an access code.

### INTRODUCTION TO PAPER C AND PAPER D COURSES:

These complement the E6/E7 and E3/E4 Paper C and Paper D courses. The Introduction to Paper C course is designed for those who are new to Paper C and are unfamiliar with the paper. It provides an overview of how to approach Paper C and by attending this course you will be better prepared to get more out of the 1.5 day E6/E7 course, which includes practice of past papers. By attending the Introduction to Paper D course you will be able to spend more time during the E3/E4 course practising DII/Part 2 long questions, with tutor feedback.

### SPECIAL OFFERS:

- If you book a full suite of 27 November to 1 December Papers A-D courses, we offer a special rate of £1,870 (excl. VAT), including four nights' accommodation. This represents a saving of £130 (excl. VAT) on the normal fee.
- If you add both Introduction courses on 2-3 November 2017, the fee is £2,370 (excl. VAT)—a further saving of £100.
- Where a firm books 5 or more courses, we offer a discount of 5%.

### ACCOMMODATION:

- If no accommodation is required, the course fee will be reduced by £95 (excl. VAT), for each relevant night.
- If additional accommodation is required the night before or after a course, £95 (excl. VAT) should be added to the course fee for DBB or £70 for B&B.
- Accommodation (with meals) between E4 or E7 and E8 or E9 is offered at a special rate of £60 (excl. VAT).

## COURSE CALENDAR

2017		
Thursday 2nd November AM & PM	INTRODUCTION TO PAPER C 18/E5 <i>(1 day)</i>	
Friday 3rd November AM & PM	INTRODUCTION TO PAPER D 18/E2 <i>(1 day)</i>	
Monday 27th November AM & PM & Tuesday 28th November AM	PAPER D LAW 18/E3 <i>(1.5 days)</i>	PAPER C OPPOSITION 18/E6 <i>(1.5 days)</i>
Tuesday 28th November PM & Wednesday 29th November AM & PM	PAPER C OPPOSITION 18/E7 <i>(1.5 days)</i>	PAPER D LAW 18/E4 <i>(1.5 days)</i>
Thursday 30th November AM & PM & Friday 1st December AM & PM	PAPERS A&B DRAFTING & AMENDMENT 18/E8 <i>(2 days)</i>	PAPERS A&B DRAFTING & AMENDMENT 18/E9 <i>(2 days)</i>
Monday 4th December AM & PM & Tuesday 5th December AM & PM	COURSE FOR 2018 PRE-EXAM 18/E1 <i>(1.8 days)</i>	

BOOK ONLINE AT [www.jddcourses.co.uk](http://www.jddcourses.co.uk)

or e-mail [jdd.consultants@ntlworld.com](mailto:jdd.consultants@ntlworld.com)

Please note our address and telephone number set out below:

JDD Consultants, 5 Tennyson Road, Bedford, MK40 3SB

Tel. +44(0)1234 294049