

JDD CONSULTANTS REVISION COURSES FOR THE OCTOBER 2026 PEB EXAMINATIONS

COURSE FEES

In person course fees, are inclusive of tuition, meals and use of the leisure facilities at the Training Centre, but exclusive of VAT. The 1.5-2 day in person courses include 1 night's accommodation (with lunch, dinner and breakfast). If not needed, we will reduce the course fee by £100+VAT.

The Zoom virtual courses cover tuition and access to course materials.



EXTRA ACCOMMODATION

If you need accommodation at the venue the night **before** an in person course starts or **after** it ends, we can book this for £110+VAT, with dinner and breakfast, or £90+VAT for accommodation with just breakfast.

JOINING INSTRUCTIONS

Will be emailed at least four weeks before the start of each course, together with a course programme and details of any pre-course work.



CANCELLATION FEES

Withdrawal from a course without a replacement from your organisation is likely to incur the following cancellation fees: 2-4 weeks prior, 20%; <2 weeks prior 50%; and on the course start date, 100%.

HOW TO BOOK

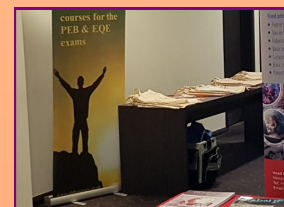
By Internet Visit our website at www.jddcourses.co.uk and book online or e-mail jdd.consultants@ntlworld.com or admin@jddcourses.co.uk

By telephone Phone +44(0)7791-959630 (Whatsapp and mobile)

By post Return a completed booking form to:

JDD Consultants
5 Tennyson Road
Bedford
MK40 3SB

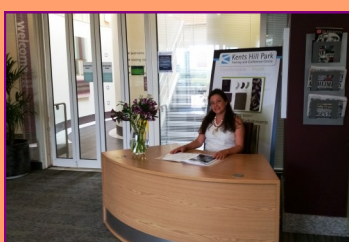
While there is no closing date for applications, **early bookings are advised** as places are allocated on a 'first come, first served' basis. Unplaced applicants will be put on a waiting list.



THE TRAINING VENUE FOR THE IN PERSON COURSES

Is in **Milton Keynes**. It is a modern purpose-built training centre with its own residential and leisure facilities.

The residential element is an important feature of our courses, enabling delegates to discuss issues with colleagues and tutors in an informal atmosphere over meals and after dinner.



JDD CONSULTANTS REVISION COURSES

FOR THE PEB 2026 EXAMINATIONS

MAY TO SEPTEMBER 2026



We are pleased to announce our programme of revision courses for candidates preparing for the October 2026 PEB examinations of the Chartered Institute of Patent Attorneys.

Most of the courses will be held in person in **Milton Keynes**, but there are also a number of Zoom-based courses. The courses are delivered by an experienced team of tutors and are supported by an online Moodle resources and discussion forum. **Early bookings are advised.**

Please ensure that all interested people in your organisation see this leaflet

REVISION COURSES FOR THE FOUNDATION CERTIFICATE EXAMS

| Ref. No. | Course | Tutor(s) | Dates | Attendance Details | Fee + (ex VAT) | Meals & Accommodation |
|----------|--|---------------------------------|---------------------------------|--|----------------|--|
| 26/A | UK Patent Law (FC1) (2 days) | Ben Shepherd & Mark Yeadon | 29-30 June | 10am on 29th to 4pm on 30th | £820 ▲▲ | L, D, A, B, L |
| 26/B | English Law (FC2) (2 days) | Lucy Flaim & Bryony Gold | 11 July (Pt 1) + 18 July (Pt 2) | 9.30am to 4.30pm on 11th & 18th | £740 | 2 day (in two 1 day parts) Zoom course |
| 26/C | International Patent Law (FC3) (2 days) | Andrea Williams & Rhyan Probert | 22-23 June | 10am on 22nd to 5pm on 23rd | £820 ▲▲ | L, D, A, B, L |
| 26/D | Design & Copyright Law (FC4) (2.5 days) | Deborah Maxwell & Jack Livsey | 24-25 June + 8 September | 10am on 24th to 1pm on 25th + 8 September MS Teams question practice | £920 | L, D, A, B, L |
| 26/E | Trade Mark Law (FC5) (2 days) | Sharon Daboul | 26-27 June | 9am on 26th to 4.30pm on 27th | £700 | 2 day Zoom course |

ACCOMMODATION, SPECIAL OFFERS AND ADDITIONAL INFORMATION

KEY:

+ Exclusive of VAT A = Accommodation at venue; B = Breakfast; D = Dinner; and, L= Lunch.

ACCOMMODATION FOR THE IN PERSON COURSES

The fees shown above for 1.5 day and 2 day in person courses **include** 1 night's accommodation, with lunch, dinner and breakfast. If no accommodation is required, the course fee will be reduced by £100+VAT for each relevant night. If accommodation is required for the night before or after an in person course, this can be reserved: the additional cost is £110+VAT in the case of dinner, bed and breakfast, or £90+VAT for bed and breakfast.

Where accommodation (with meals) is **between** consecutive in person courses the extra cost is **£100+VAT**.

SPECIAL OFFERS

We offer a **discount of 5%** on course fees for firms which book **five places/courses or more**.

For those taking **all five Foundation Certificate courses** (with accommodation also on 23 June), we offer a special package rate, after all discounts, of **£3,700+VAT**: this represents a saving of £400+VAT (i.e. a discount of ca.10%).

NOTES ON SPECIFIC COURSES

▲ The 26/R & S FD4 'split course' are geared towards those taking FD4 for the first time and who would like to attend an introductory Day 1 in late May, which provides guidance and initial practice on how to approach FD4 paper followed by a further 2 days, in mid-July, which will cover in more detail key aspects of the paper, along with practice of the learning so far. You will be asked to do a past paper after Day 1, receiving feedback, and a further paper after Part 2. There will be a 2-hour Zoom meeting in September to discuss the recent paper tackled and for any further queries. The split course provides a more gradual and thorough introduction to FD4 than the more intensive 2-day courses.

▲▲ These courses have higher fees as a feature is tutor review and feedback on a past paper you will be asked to attempt before or after the course.

▲▲▲ The FD4 re-sitter course includes tutor feedback on your 2025 exam script **plus** tutor review and feedback on a past paper you will be asked to attempt after the course. For re-sitters who have attended a JDD FD4/P6 course in 2025 or earlier, the fee is reduced by £60+VAT.

The 26/L & M courses are being held virtually, using Zoom, with the number on each course limited to 12 to enable a high level of interaction.

REVISION COURSES FOR THE FINAL DIPLOMA EXAMS

| Ref. No. | Course | Tutor(s) | Dates | Attendance Details | Fee + (ex VAT) | Meals & Accommodation |
|----------|---|---|---------------------------------|---|------------------|--------------------------------------|
| 26/F | Advanced IP Law & Practice (FD1) | Scott Goodall & Ali Lee | 25-26 June | 10am on 25th to 5pm on 26th | £820 ▲▲ | L, D, A, B, L 2 days in person |
| 26/G | Advanced IP Law & Practice (FD1) | Scott Goodall & Ali Lee | 23-24 July | 10am on 23rd to 5pm on 24th | £820 ▲▲ | L, D, A, B, L 2 days in person |
| 26/H | Advanced IP Law & Practice (FD1) | Scott Goodall & Ali Lee | 17-18 August | 10am on 17th to 5pm on 18th | £820 ▲▲ | L, D, A, B, L 2 days in person |
| 26/I | Advanced IP Law & Practice (FD1) | Gareth Scaddan & Khalil Davis | 29-30 June | 10am on 29th to 5pm on 30th | £760 | L, D, A, B, L 2 days in person |
| 26/J | Advanced IP Law & Practice (FD1) | Gareth Scaddan & Izzy Ferguson | 27-28 July | 10am on 27th to 5pm on 28th | £760 | L, D, A, B, L 2 days in person |
| 26/K | Advanced IP Law & Practice (FD1) | Christopher Hartland & Sam Walker-Smith | 8-9 July | 10am on 8th to 5pm on 9th | £820 ▲▲ | L, D, A, B, L 2 days in person |
| 26/L | Advanced IP Law & Practice (FD1) | Andy Caulfield | 26 June (Pt 1) & 10 July (Pt 2) | 9am to 4.30pm on 26th and 10th | £660 ▲▲ | 2 days split Zoom course |
| 26/M | Advanced IP Law & Practice (FD1) | Andy Caulfield | 3 July (Pt 1) & 13 July (Pt 2) | 9am to 4.30pm on 3rd and 13th | £660 ▲▲ | 2 days split Zoom course |
| 26/N | Drafting of Specifications (FD2) | Julian Potter | 19-20 August | 10am on 19th to 1pm on 20th | £720 ▲▲ | L, D, A, B, L 1.5 days in person |
| 26/O | Drafting of Specifications (FD2) | Julian Potter | 20-21 August | 2pm on 20th to 5.30pm on 21st | £720 ▲▲ | L, D, A, B, L 1.5 days in person |
| 26/P | Amendment of Specifications (FD3) | Peter Gray & Mark Yeadon | 19-20 August | 10am on 19th to 1pm on 20th | £720 ▲▲ | L, D, A, B, L 1.5 days in person |
| 26/Q | Amendment of Specifications (FD3) | Peter Gray & Mark Yeadon | 20-21 August | 2pm on 20th to 5.30pm on 21st | £720 ▲▲ | L, D, A, B, L 1.5 days in person |
| 26/R | FD4 'Split course' for new candidates (3 days) | Chris Mercer & Henrietta Rooney | 26 May (Z) + 13-14 July (Z) | 9.30am to 5pm 10am on 13th to 4pm on 14th | £780 ▲▲ | Pt 1 Zoom course Pt 2 Zoom course |
| 26/S | FD4 'Split course' for new candidates (3 days) | Chris Mercer & Henrietta Rooney | 27 May (Z) + 21-22 July | 9.30am to 5pm 10am on 21st to 4pm on 22nd | £950 ▲▲ | Pt 1 Zoom + L, D, A, B, L |
| 26/T | Infringement & Validity (FD4) | William Smith & Nathan Turnbull | 16-17 June | 10am on 16th to 5pm on 17th | £820 | L, D, A, B, L 2 days in person |
| 26/U | Infringement & Validity (FD4) | William Smith & Nathan Turnbull | 21-22 July | 10am on 21st to 5pm on 22nd | £820 | L, D, A, B, L 2 days in person |
| 26/V | Infringement & Validity (FD4) | Tim Allsop & Sarah Boxall | 6-7 July | 10am on 6th to 4pm on 7th | £820 ▲▲ | L, D, A, B, L 2 days in person |
| 26/W | FD4/P6 Re-sitter Course | Tim Allsop & Sarah Boxall | 29-30 June | 1pm on 29th to 4.30pm on 30th | £660/£720 ▲▲▲ | D, A, B, L 1.5 days in person |
| 26/X | Infringement & Validity (FD4) | Andy Leppard & William Richards | 1-2 July | 10am on 1st to 5.30pm on 2nd | £760 | L, D, A, B, L 2 days in person |